



CANACRE

A QUANTA SERVICES COMPANY

Project perspective, founded in land.

We are technical experts in land, energy, and transportation development delivering accurate, innovative, and agile solutions to our partners.

**COMPREHENSIVE
LAND SERVICES**

**EXCEPTIONAL
SERVICE**

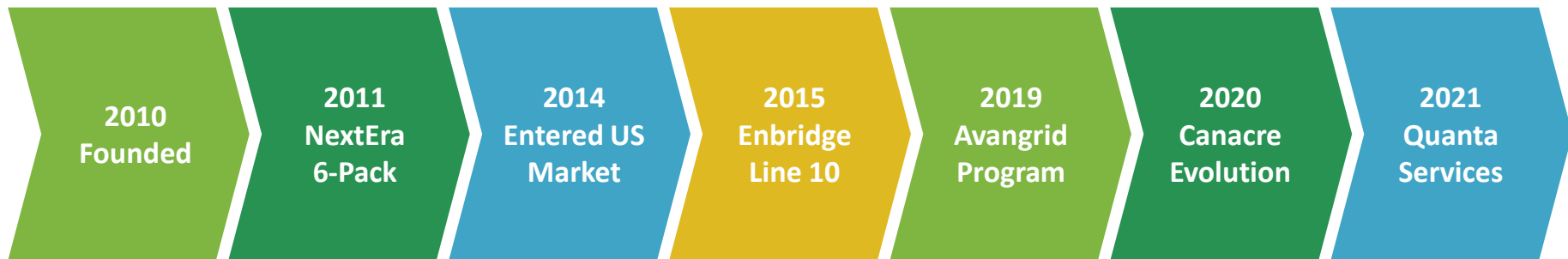
**MULTIDISCIPLINARY
SERVICE DELIVERY**

**VALUE-ADD PROJECT
SOLUTIONS**



Canacre's History

Canacre has supported infrastructure development projects since 2010, representing over \$10B in capital investments by our clients.



Canacre Today

Over the last 2 years, Canacre has secured over 20,000 options, leases, permits, licenses, and easement requirements from hundreds of authorities.

OFFICE LOCATIONS

USA :

- Williamsville, New York
- Waterville, Maine

Canada:

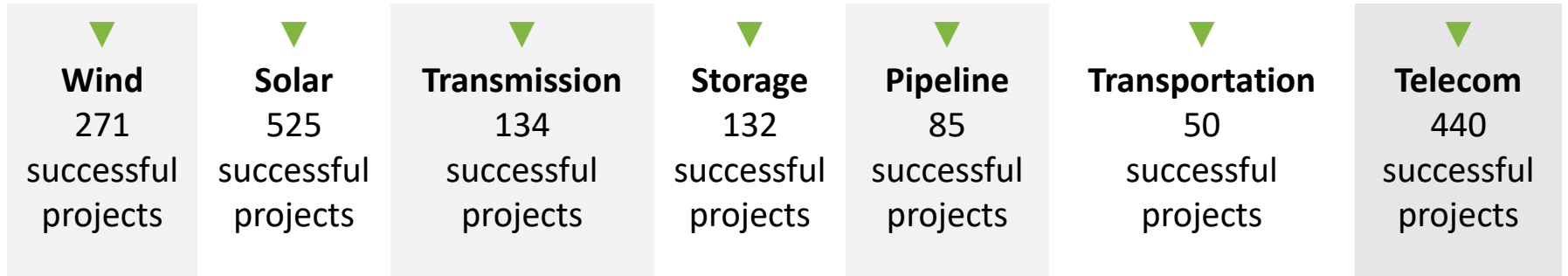
- Toronto, Ontario
- Edmonton, Alberta
- Ottawa, Ontario
- Halifax, Nova Scotia
- Vancouver, British Columbia

- Canacre employs over 160+ industry professional across North America
- Project backlog represents an approximate 60/40 split between the US and Canada
- Specialized in complex infrastructure projects in urban environments – leveraging project-based approach and visual consultation tools
- Regulated ROW and Renewable Energy projects are the predominate focus of our marketing efforts – future turnkey development service offerings

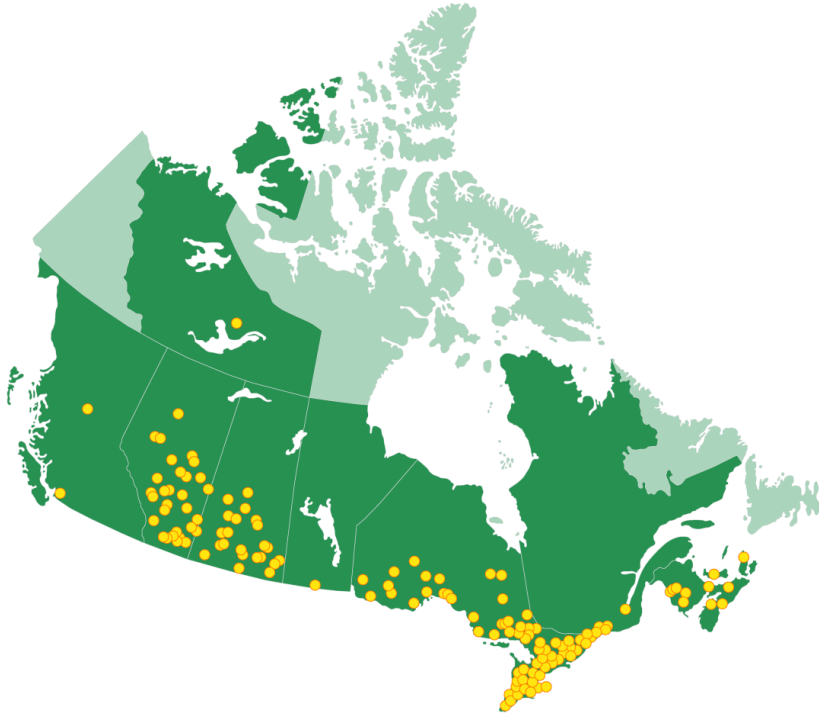


Markets We Serve

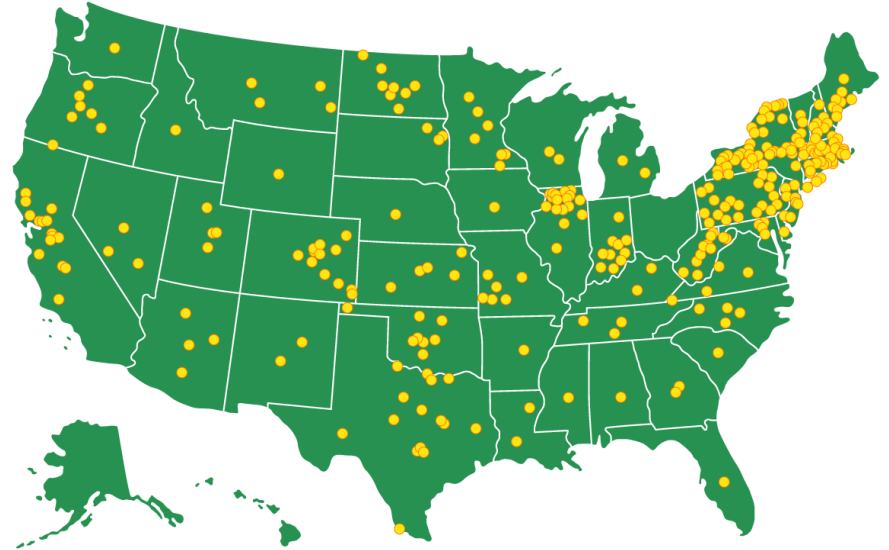
Canacre focuses on identifying areas of expertise in several infrastructure development industries that are under-serviced or in need of improved efficiency and accuracy.



Canacre's Project Experience



CANADA



USA



Key Differentiators

Canacre takes a project perspective in approaching land and ROW services.

- Canacre utilizes an employment-based business model instead of utilizing contractors
- Land-use planning professionals incorporated into crossings and regulatory support teams
- Canacre's teams are uniquely versed in supporting projects in both the US and Canada
- Project delivery model with three levels of project and account oversight and escalation
- ISO 9001 Quality Management System
- Focus on integrated services and visual consultation tools to drive negotiation success rates on projects of all sizes
- Well developed due diligence program in support of project M&A



Services



CANACRE
A QUANTA SERVICES COMPANY



**Integrated project development
solutions, founded in land.**

Project Management

Canacre has developed a variety of project tools and processes to help support our clients in project execution.

Our three-tiered project management team is responsible for ensuring that Canacre completes deliverables that meet the defined scope expectations for project stakeholders.



DIRECTOR

The **1st level** of project management is completed by a centralized **Director of Project Delivery** that is responsible for tracking high-level budgets, milestones, and due dates associated with each project.



MANAGER

The **2nd level** of project management is completed by a project specific **Project Manager** who is the primary point of contact with clients.



CONTROLS

The **3rd level** of project management is completed by a project specific **Project Controller** who monitors all daily field expenses and tracks project requests.



Land Services

Land Negotiation

- Canacre's land team is comprised of skilled communicators who build strong professional relationships and lasting trust with project stakeholders
- Active in the IRWA and dedicated to providing clients with the highest standards of service and ethical practices

Land Administration

- Canacre provides customized title and land administration services
- Our team has extensive experience in reviewing contracts, encumbrances, appraisals, and recording interests on title across North America
- We consider all elements recorded against the title that could have an impact on the project



Planning and Permitting

Permitting and Land-Use Planning

- Collaborate with clients to provide support for specific permitting requirements
- Work independently to coordinate and obtain agreements, permits, and approvals
- Facilitate public notices, open houses, and public meetings

Regulatory Support

- Experienced in assisting clients in developing a basis for engagement with communities and municipalities regarding an initiative or project at hand
- Prepare and coordinate applications, manage documentation, consult with permitting and regulatory bodies, and negotiate with public, private, and third-party agencies



GIS and Data Management

Mapping and Geomatics

- Canacre's GIS team provide a wide range of custom mapping, large scale land analysis, site and route selection, and can identify specific features of interest
- Our team has extensive experience in large-scale data projects and can process any data to allow for more effective organization and use

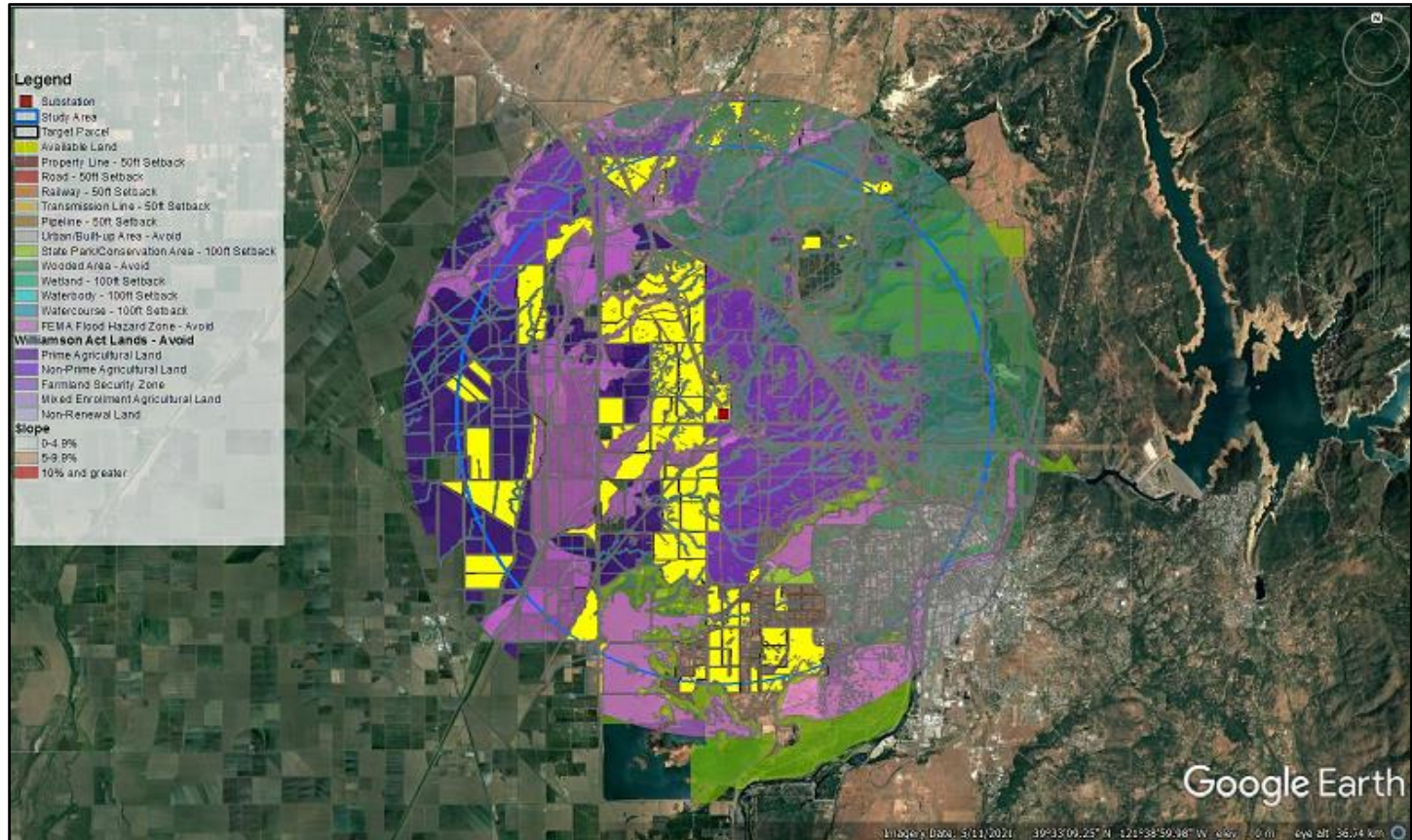
Technical Services

- Mapbase: a proprietary web-based interactive GIS that facilitates the management, communication, and analysis of project data between our partners (i.e. access coordination)
- Canacre has developed a visual simulation product capable of providing defensible infrastructure simulations within regulatory settings



Deliverables

Constraints and Available Land Analysis

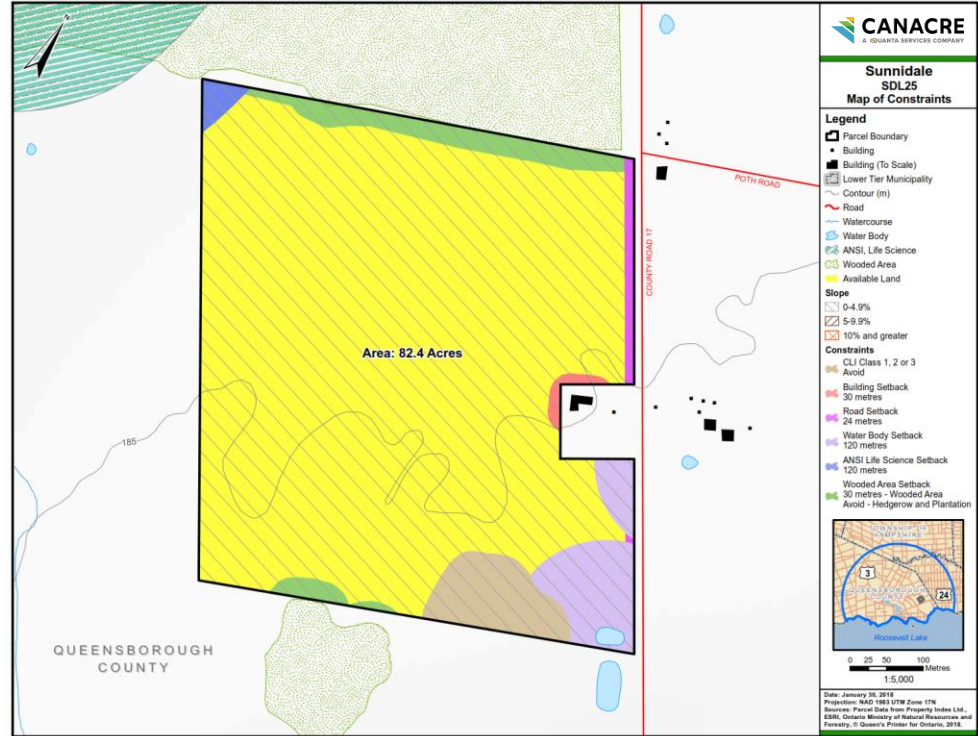


Property Imagery Map

SDL25

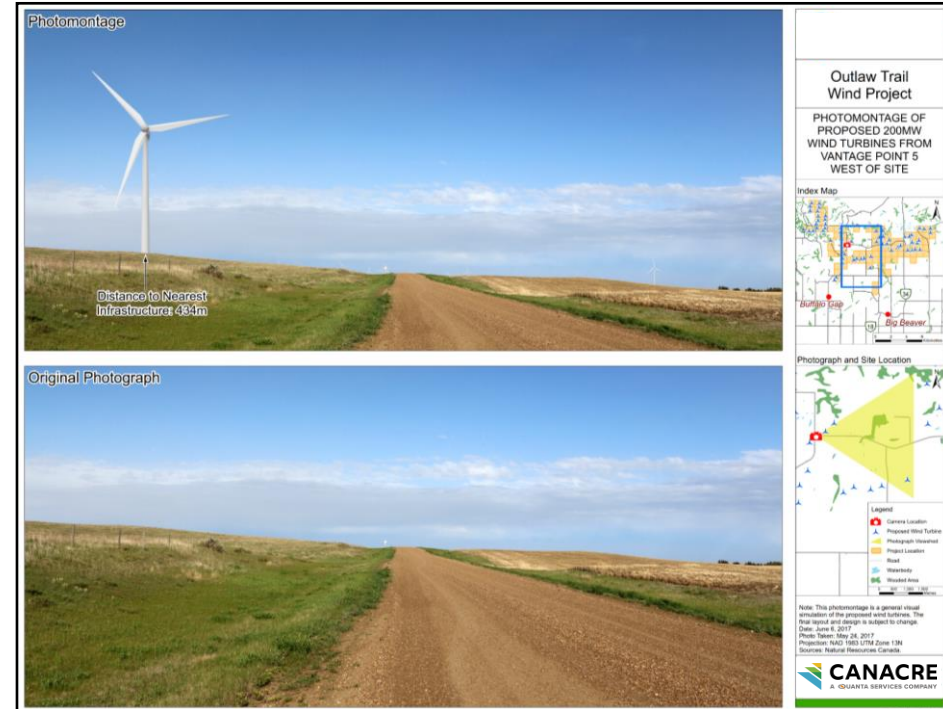
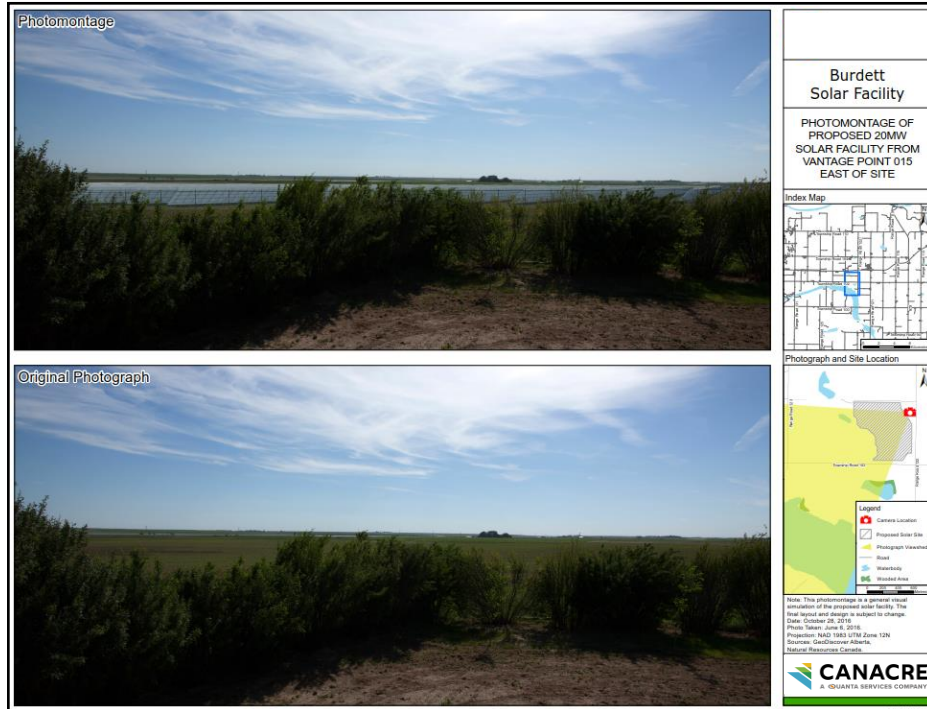


Property Map (with constraints)

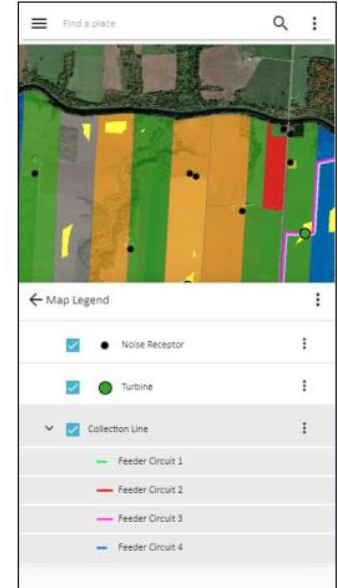
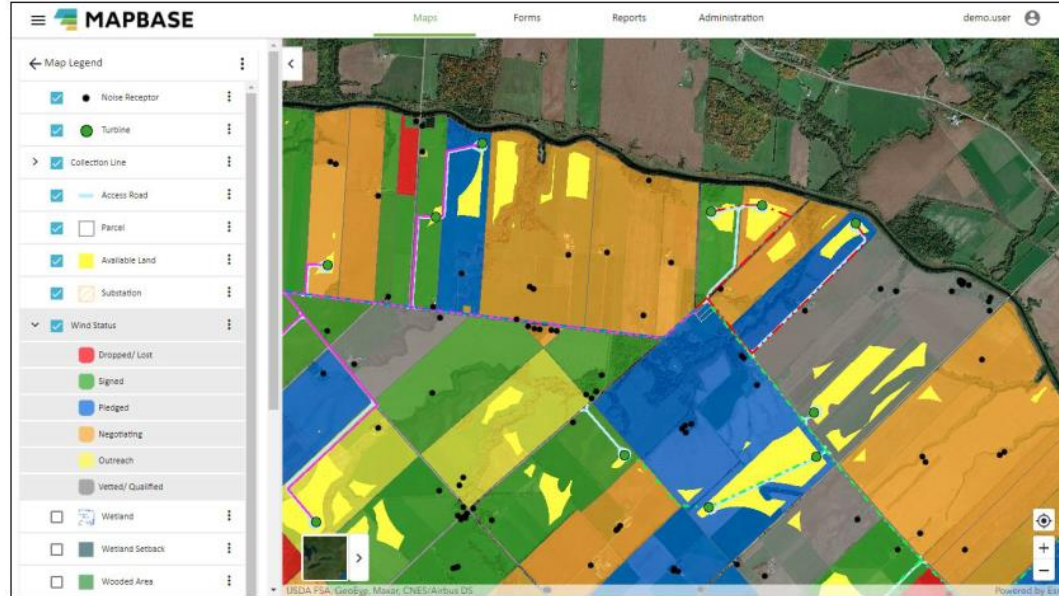
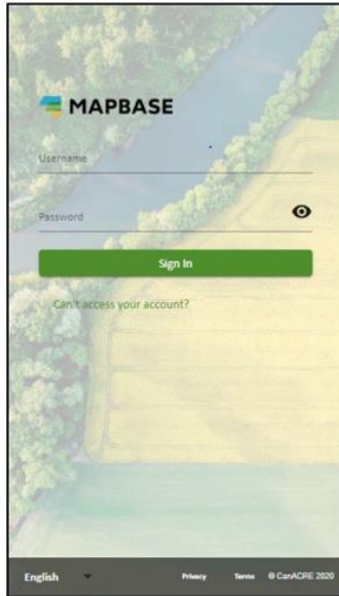


Sample Solar Visual Simulation

Sample Wind Visual Simulation



Mapbase Project Management



Project Profiles



CANACRE
A QUANTA SERVICES COMPANY

Waterdown to Finch Pipeline

Imperial

Replacement of a 62.5 km (38.8 mile) section of pipeline running from Imperial's Waterdown pump station in Hamilton to the company's terminal storage facility in Toronto's North York community, through some of the most congested areas in the Greater Toronto and Hamilton Area.



Location:	Greater Toronto and Hamilton Area, Ontario
Phase of work:	Acquisition and Construction
Regulatory Body:	Canada Energy Regulator (CER)
Affected Properties:	211+
Unique Interests:	451+
Permanent and Temporary Crossings:	1,000+



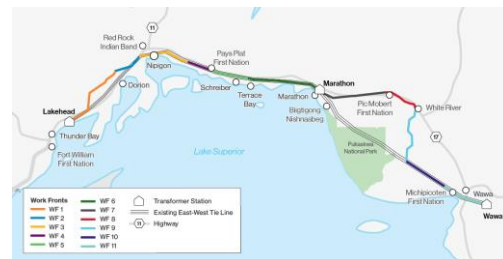
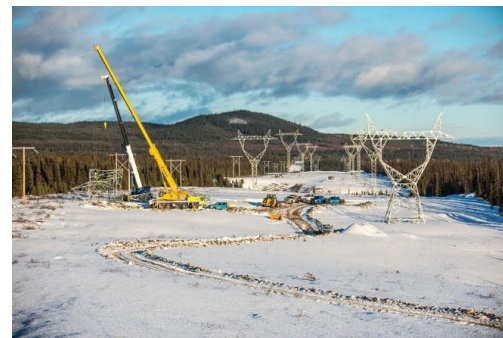
East-West Tie Transmission Line

NextBridge Infrastructure LP

The East-West Tie transmission project is a 449 km (278.9 mile) double-circuit 230 kV transmission line connecting the Lakehead Transfer Station in the Municipality of Shuniah near the City of Thunder Bay to the Wawa Transfer Station located east of the Municipality of Wawa.

Canacre's Project Manager represented the project at OEB hearings to support the LTC application.

Location:	Greater Toronto and Hamilton Area, Ontario
Affected Properties:	300+
Unique Interests:	470+
Permanent and Temporary Crossings:	1,800



EaaS Deployment Due Diligence

AlphaStruxure

Canacre is providing permitting due diligence for up to 22 project sites across the USA. Canacre's planning and permitting team is conducting zoning and ordinance research, review of permitting requirements and applications.

Additionally, Canacre will create a project database of the sites, containing property information, property sketches, and permitting information.

Location:	California, Mississippi, Tennessee, New York, New Jersey, Massachusetts
Number of Counties:	17
Number of Sites:	22



New York Utility Solar Portfolio

EDF Renewables

Canacre provides land acquisition, land administration, GIS support, and public consultation services in support of the development of utility-scale projects in New York. In support of the client's permitting process, Canacre also undertook a thorough community engagement program, consulting with community members and adjacent landowners.

For the Ridge View Project alone Canacre has signed 45 solar agreements. The Ridge View project will be one of the largest in New York at 350 MW if awarded.

Location:	New York (Morris Ridge, Genesee, Sole, Ridge View, Columbia, Rosalen)
Portfolio Size:	2,100 MW
Acreage:	Over 20,000 acres acquired to-date
Number of Unique Projects:	12 to-date



Call to Action

1. Meet and discuss how Canacre can collaborate on projects with Quanta Services partners
2. Find opportunities to introduce EPC partners to early stage project developers we support
3. Attendance at Clean Power 2021 - looking to discuss turnkey development services

CANACRE BD CONTACT:

Tim Rallis, Vice President, Business Development

trallis@canacre.com

416-528-7410





CANADIAN HEAD OFFICE

489 Queen St. E, Suite 300
Toronto, ON
M5A 1V1

AMERICAN HEAD OFFICE

300 International Dr., Suite 100
Williamsville, NY
14221